



R.N.O. W., Inc.
8636R West National Avenue
West Allis, WI 53227

QUOTATION

Quote Number: 2022-6811
Quote Date: May 27, 2022
Page: 1

Voice: 414-541-5700
Fax: 414-543-9797

Quoted To:

VILLAGE OF BRISTOL
8101 195TH STREET
BRISTOL, WI 53104
U.S.A.

Accepted By: _____

Sign above to accept quotation and place order

Customer Fax: _____

Customer ID	Good Thru	Payment Terms	Sales Rep
VILLAGE OF BRISTOL	6/26/22	Net 30 Days	JAS

Quantity	Item	Description	Unit Price	Amount
1.00	INSIGHT 208001	INSIGHT IRIS MAINLINE CRAWLER CAMERA PAN AND TILT, 600' CABLE WITH WINDOWS OPERATING SYSTEM	34,995.00	34,995.00
1.00	INSIGHT 106013	SONDE 512HZ	690.00	690.00
1.00	INSIGHT 512HZ	INSIGHT 512HZ SONDE LOCATOR: Includes: 3 active frequency receiver with carrying case and batteries	1,495.00	1,495.00
6.00	INSIGHT 159003	TIRE RETAINER REV A	34.00	204.00
6.00	INSIGHT 119002	IRIS TRACTOR WHEEL HUB	125.00	750.00
4.00	INSIGHT 204004	IRIS PNEUMATIC TIRE KIT (1 TIRE PER ASSY - 4 PER UNIT)	169.00	676.00
4.00	INSIGHT 509007	4" GRIT (CUA CLAW) WHEEL	475.00	1,900.00
1.00	VIR CGP01	Cable Guide Pulley	770.00	770.00
1.00	VIR TRP	Top roller pulley	770.00	770.00

Thank you for the opportunity to quote

SUBMITTED BY _____

Steven D. Krall
President

Subtotal	42,250.00
Sales Tax	
Freight	
TOTAL	42,250.00



IRIS MAINLINE CAMERA

COMPACT & PORTABLE MAINLINE CRAWLER INCLUDES



SYSTEM WARRANTY:

All items furnished in accordance with these specifications shall be covered by the manufacturers and/or suppliers standard warranty or guarantee on new equipment. The minimum warranty period of the new video inspection equipment will be one (1) year for all parts and labor on manufacturer's defects.

INCLUDED WITH THE SYSTEM



15V POWER CORD



PENDANT



SUNSHADE



6 X MIDI WHEELS



6 X SMALL WHEELS



LCD COVER



RAIN COVER

ADDITIONAL ADD-ONS

PART

PRICE

512hz Sonde Add-on

106013



Pneumatic Air Tire Assembly (4) + Hub (up to 18" pipe)

208100



Replacement tire tread – 6" ea.

509004



Replacement tire tread – 8" ea.

509005



INSIGHT VISION - SEWER CAMERA MANUFACTURER

We're an innovative American manufacturer that designs and manufactures advanced sewer inspection cameras. We focus on developing high-performance and user-friendly video inspection equipment that delivers excellent field results.

"To better serve our customers, we consistently manufacture to our highest quality standard of sewer cameras and provides personalized customer service. Our work environment is constantly dynamic, flexible, forward thinking and systematically geared towards our customers!"

Other sewer cameras we manufactured:



VUTEK PUSH CAMERA



OPTICAM PUSH CAMERA



19750 Edgewood Dr
Lannon, WI 53046
T: 800-381-9134
F: 262-264-0725
E: support@envirotechequipment.net

Quote No. 22-0022007

Date: 8/16/2023
Terms: Net 30
Delivery: UPS Ground
FOB:

Customer

Village of Bristol
Attn: Joe Panek
19801 83rd Street
Bristol, WI 53104

Item	Ordered	Description	Price	Total
IBAK System	1	IBAK Portable Mainline System to Include the Following Equipment: (1) Orion Zoom Pan & Tilt Camera (1) T66.1 Camera Tractor for 4" and larger pipelines 4",6" and 8" wheelsets (1) Camera Connection Type 1 (1) Weights for T66 (1) Set of Carbide Wheels for 8" and larger (1) BP100 Control Console with 10" display and (2) Joysticks (1) KW306 Cable reel with 1000' of cable (1) Cable deflection pulley with rope and holder (1) Set of Downhole Poles ** Note Install Not Included	78,848.00	78,848.00

**Providing Customer Satisfaction
Through Trusted Partnerships**

Note: Any and all shipping and sales tax will be added to this invoice.

Sub-total	\$78,848.00
Tax ()	0.00
Total	\$78,848.00



IRIS MAINLINE CAMERA

MOTORIZED CRAWLER DESCRIPTIONS

A robust crawler designed to be water resistant and can be fully submersible in water filled sewer pipes. Made out of corrosion resistant brass to withstand harsh and chemically treated underground environment. To assure the longevity of our crawler, we have completed a 250,000 ft. runs of quality life-cycle testing on the crawler clutch. Built with a full 360 degree rotation and 180 degree pan (fixed focus camera), which capture a full detail inspection. Integrated with a user-friendly digital hand controller that will reset the camera back to upright position, no more manual adjustment and reducing setup time.



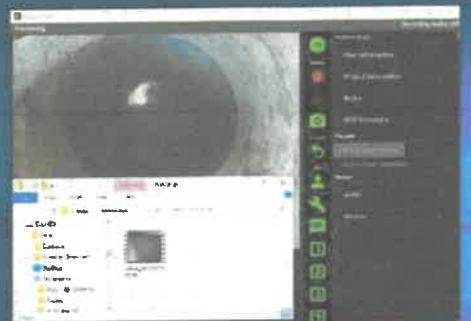
OPERATING PLATFORM

- Windows 7 x 64 Professional
- Intel i5 Processor
- Powerful Windows Apps
- Wireless Network Enabled
- 500GB Solid State Drive
- External recordings to USB and SD
- Support External HDMI Port
- Screen is 9.7" color High Resolution LCD touchscreen
- Interface includes Wireless Remote Access Wi-Fi



IRIS SYSTEM APP

- Display distance counter – Top left (Fixed)
- Audio recording over video via USB Microphone or headset
- On-screen distance counter display in feet or meters
- Digital on-screen Text with digital keyboard
- Works on Windows 7, 8 and 10 Operating System
- OSD means On Screen Display
- OSD Displays for 15 sec
- Option to Pause and continue recording
- Settings are Auto-save until new changes are made
- Playback recorded videos on Windows Media Player
- MP4 format can be played back on most media player
- Automatic file storage to Snapshots and Picture folder
- Easy "One-Touch" recording from the touch-screen
- Take pictures in JPG format
- Record to MP4 video format
- Third-party PACP software can be integrated with the system
- User-friendly system control interface
- Displays video file sizes while recording
- Option to turn On/Off audio recording
- Option to add up to 4 messages
- Simple "Clear All" button for new data entry



NEW MOBILE PHONE APP

- Stream Wireless Video (No Internet Needed)
- Works on approved Android™ & Apple™ mobile devices (Free Download)
- View, record, playback and snapshots
- Upload to Internal Device, Email, or YouTube
- Display wireless video connection up to 100ft.
- Snapshots in JPEG/ PNG





IRIS MAINLINE CAMERA

MOTORIZED REEL DESCRIPTIONS

The IRIS motorized reel holds 600 feet of multi-conductor Kevlar strength video cable. The reel has a motor rewind capability level wind with attached distance counter for ease of use. Being automatic when in the rewind/ feed assist mode will allow the cable to be rewound at the same speed as the crawler to avoid running over the cable. The integrated reel and control unit is built with a telescopic handle and wheels for easy portability. Also, integrated with additional accessory power outlet, multiple recording USB ports, HDMI, and video jack to maximum control and capabilities.



MOTORIZED REEL CABLE DRUM

- Variable speed motorized reel rewind and payout
- Automatic freewheel drum clutch
- Standard 600' Kevlar strength mini-coaxial cable
- Tangential measuring wheel system
- Footage Counter
- Level wind system
- Reel weight is 150 lbs.
- Reel dimensions is 29"H x 20"W x 21"D
- Reel is splash resistant with cover
- Reel power 110 volts 240V optional
- Auxiliary video input and output ports for external video devices
- User accessible USB 2.0 and 3.0 ports
- Ethernet port for network connection
- Multi-Monitor operation enabled



MOTORIZED CRAWLER & CONTROLLER

- Six-wheeled crawler with all-wheel drive
- Three available wheel sets for various pipe size ranges
- Pipe diameter 6" to 12" (Up to 18" with additional wheel set)
- High grip polymer tires for demanding conditions and terrain
- Heavy-Duty Planetary gear transmission with Rare Earth Motor
- Leak/pressure test valve/port
- Hardened helical final drive gears
- Easy/rapid wheel change with single retaining nut per wheel
- Weight of transporter is 35 lbs.
- Transporter dimensions is 19"L x 3.5"H x 5"W
- Built with (9) Bright LED lateral lights
- Control the light brightness on the crawler
- Digital hand controller with "Auto-home" Button
- Tractor operates via digital hand controller



PAN & TILT CAMERA

- Camera Pan & Tilt is 360 degree rotation by 180 degree pan
- Fixed focus at 6" up to 18" pipeline
- Camera head height adjustable for various size pipes
- Impact resistant and replaceable polycarbonate dome
- Video system is NTSC
- Resolution is 640 x 480 pixels
- Bright 4 front LED's provides pipe illumination
- Camera sensitivity is 1 Lux

